



CULTURAL HERITAGE & CULTURAL IMPACT ASSESSMENT

Dr. Johannes Parlindungan



Culture:

the whole complex of **distinctive spiritual, material, intellectual and emotional features** that characterize a **society or social group**. It includes not only arts and letters, but also modes of life, the fundamental rights of the human being, value systems, traditions and beliefs (UNESCO. 1982. Mexico city declaration on cultural policies)

Cultural Impact Assessment (CIA):

a process of evaluating **the likely impacts of a proposed development on the way of life of a particular group or community of people**, with full involvement of this group or community of people and possibly undertaken by this group or community of people

CIA is also often discussed as a sub-dimension of SIA

Tantangan dan permasalahan global terkait cagar budaya

- Ketika meratifikasi konvensi warisan dunia (World Heritage / WH), pemerintah nasional setuju untuk memastikan identifikasi, perlindungan dan pelestarian WH (Roders, 2012)
- Sejak 1994 – 2004 tercatat ada 1.570 ancaman terhadap 641 properti WH (Roders, 2012)
- Sebagian besar ancaman ini diakibatkan oleh kegagalan manajemen (lingkungan dan proyek) dan pembangunan yang agresif (Roders, 2012)

Unesco's HERITAGE IMPACT ASSESSMENT

- Potential threats should be anticipated in the management system in a property- **specific way – not “one size fits all”**
- A large number of World Heritage properties do not have a well-functioning management system
- There are many ways of assessing impact on heritage assets, some formalised in law, some very technical and sophisticated, others less so. This guidance sets down some principles and options

Assessment process:

- What is the heritage at risk and why is it important – how does it contribute to OUV?
- How will change or a development proposal impact on OUV?
- How can these effects be avoided, reduced, rehabilitated or compensated?

VALUE OF HERITAGE ASSET	SCALE AND SEVERITY OF CHANGE / IMPACT				
	No Change	Negligible Change	Minor Change	Moderate Change	Major Change
For WH properties: Very High (attributes which convey OUV)	SIGNIFICANCE OF EFFECT OR OVERALL IMPACT (EITHER ADVERSE OR BENEFICIAL)				
	Neutral	Slight	Moderate / Large	Large / Very Large	Very Large
For other heritage assets or attributes	SIGNIFICANCE OF IMPACT (EITHER ADVERSE OR BENEFICIAL)				
Very high	Neutral	Slight	Moderate / Large	Large / Very Large	Very Large
High	Neutral	Slight	Moderate / Slight	Moderate / Large	Large / Very Large
Medium	Neutral	Neutral / Slight	Slight	Moderate	Moderate / Large
Low	Neutral	Neutral / Slight	Neutral / Slight	Slight	Slight / Moderate
Negligible	Neutral	Neutral	Neutral / Slight	Neutral / Slight	Slight

WH = World Heritage

OUV = Outstanding Universal Value



BEBERAPA MODEL HIA dan CIA

HIA in Wales

Heritage impact assessment is a structured process to make sure that you take the significance of your historic asset into account when you are developing and designing proposals for change



HIA: Spadina Avenue, Canada

Project: Pembangunan gedung di sekitar bangunan cagar budaya





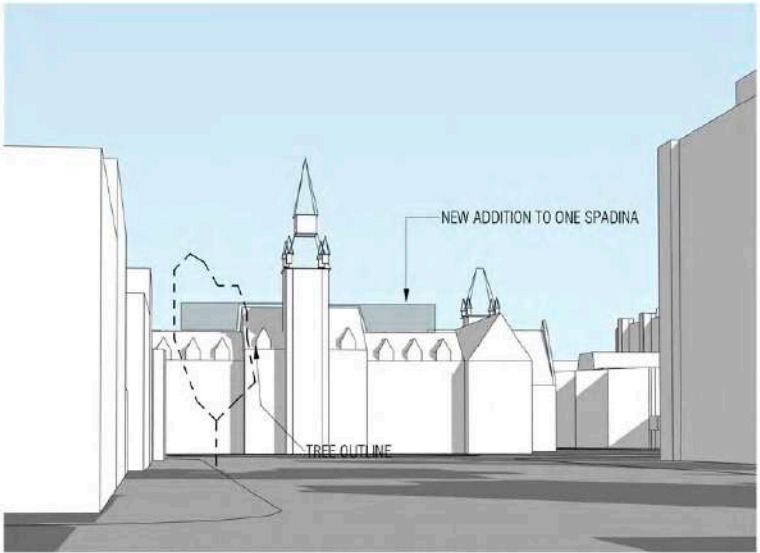
Above: 698 Spadina Avenue, with its principal (east) elevation facing Spadina Avenue and side (south) elevation facing Sussex Avenue, (Heritage Preservation Services [HPS], 2016)

Cover: Photograph of 698 Spadina Avenue taken in 1972
(City of Toronto Archives [CTA], Fonds 2032, Series 641, File 55, Item 13)

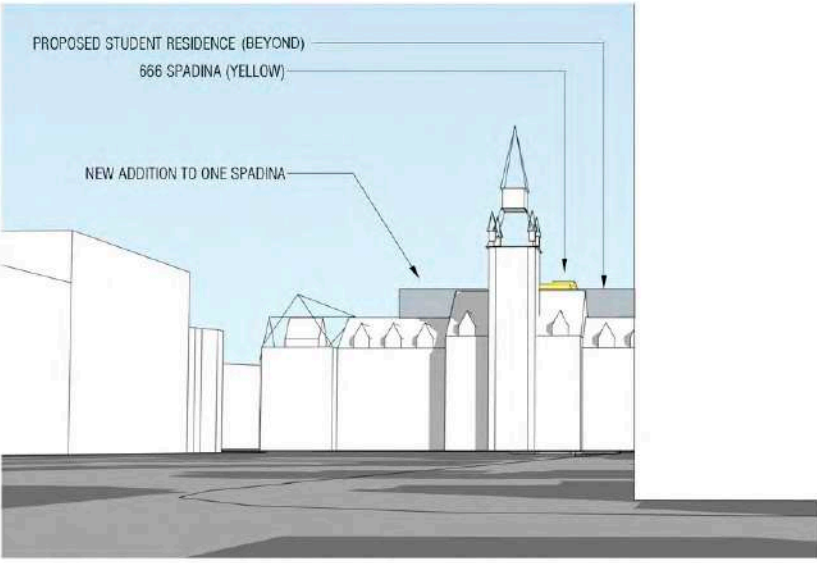
698 Spadina Avenue - John James Funston Grocery Store/Ten Editions Bookstore	
ADDRESS	698 Spadina Avenue
WARD	Ward 20 (Trinity-Spadina)
LEGAL DESCRIPTION	Plan 438 Lot 1
NEIGHBOURHOOD/COMMUNITY	Harbord Village
HISTORICAL NAME	John James Funston Grocery
CONSTRUCTION DATE	1885
ORIGINAL OWNER	John James Funston
ORIGINAL USE	Grocery store and residence
CURRENT USE*	Bookstore and 3 residential units
ARCHITECT/BUILDER/DESIGNER	n/a
DESIGN/CONSTRUCTION/MATERIALS	Brick cladding
ARCHITECTURAL STYLE	Late Victorian
ADDITIONS/ALTERATIONS	Minor rear additions, 1945 and later
CRITERIA	Design, Associative and Contextual
HERITAGE STATUS	n/a
RECORDER	Heritage Preservation Services: Marybeth McTeague
REPORT DATE	January 2017

ERA Architects Inc 2018. Heritage
impact Assessment: 698-706
Spadina Avenue & 54 Sussex
Avenue

VISUAL IMPACT ASSESSMENT



APPROXIMATE VIEW LOOKING NORTH ON SPADINA FROM COLLEGE STREET - SOUTHWEST CORNER OF INTERSECTION



APPROXIMATE VIEW LOOKING NORTH ON SPADINA FROM COLLEGE STREET - SOUTHEAST CORNER OF INTERSECTION



Cultural Impact Assessment: Lyttleton Port, NZ

12

Project: the recovery of Lyttleton Port

CIA purpose: To assess the potential effects of the proposed recovery and expansion activities on *Ngai Tahu* values and interests associated with *Whakaraupo*.

Whakaraupo is cultural landscape with a long and rich history of *Ngai Tahu* (a native community) land use and occupancy, and strong tradition of *mahinga kai*. *Ngai Tahu* have lived and fished in this harbour for generations.

HOW:

- Melibatkan “traditional authority”
- Memahami nilai arkeologis dan tradisi dari lokasi



Perbandingan Model Analisa

KASUS	PERBEDAAN	PERSAMAAN
Wales	<ul style="list-style-type: none">• Official heritage• Pendekatan teknokrat	<ul style="list-style-type: none">• Bagian dari proses EIA dari suatu proyek• Tahap mengenali nilai budaya/ sejarah• Tahap mengenali dampak proyek
Canada	<ul style="list-style-type: none">• Official heritage• Pendekatan teknokrat	
New Zealand	<ul style="list-style-type: none">• Official dan unofficial heritages• Pendekatan kolaboratif	

Official heritage: cagar budaya (heritage) yang secara resmi diproteksi oleh pemerintah, yang meliputi perlindungan hukum, kebijakan publik dan keterlibatan ahli dalam assessment dan dokumentasi

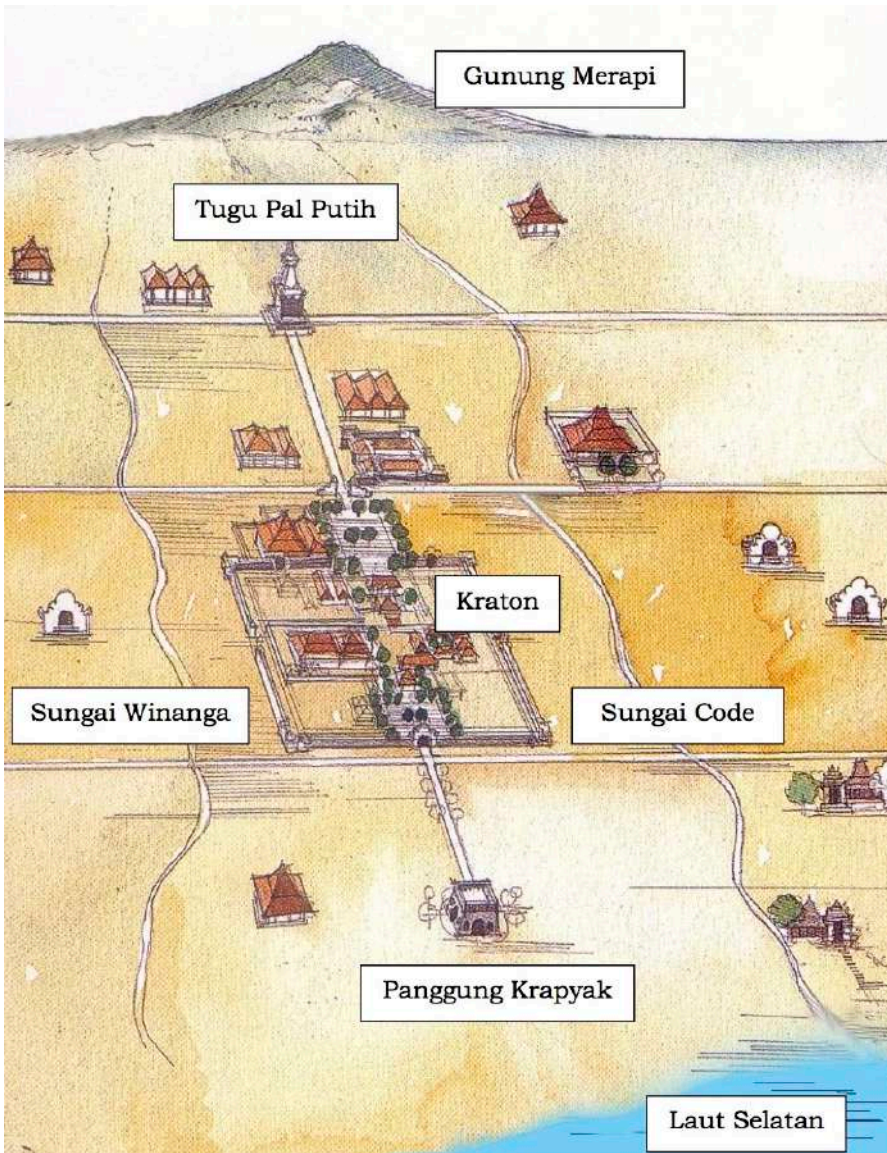
Unofficial heritage: cagar budaya (heritage) yang secara tidak secara resmi diproteksi oleh pemerintah tapi dianggap bernilai oleh warga (publik), biasanya terkait legenda, mitos atau nilai sejarah/budaya yang tidak tercatat secara resmi.



PELUANG PENGEMBANGAN METODE

A socio-semiotic investigation of historic areas in Yogyakarta, Indonesia

15



Yogyakarta sebagai kota tradisional dan kolonial

Yogyakarta sebagai kota kontemporer

Socio-Semiotics

Pendekatan textual dalam Cultural Studies

Semiotics: mempelajari makna (meaning) yang dihasilkan oleh text melalui susunan penanda (signs) dan kode-kode budaya (cultural codes)

Meaning: narasi atau ide yang diwakili oleh representasi (dalam kajian ini, representasi / material culture adalah perwujudan fisik dari ide)

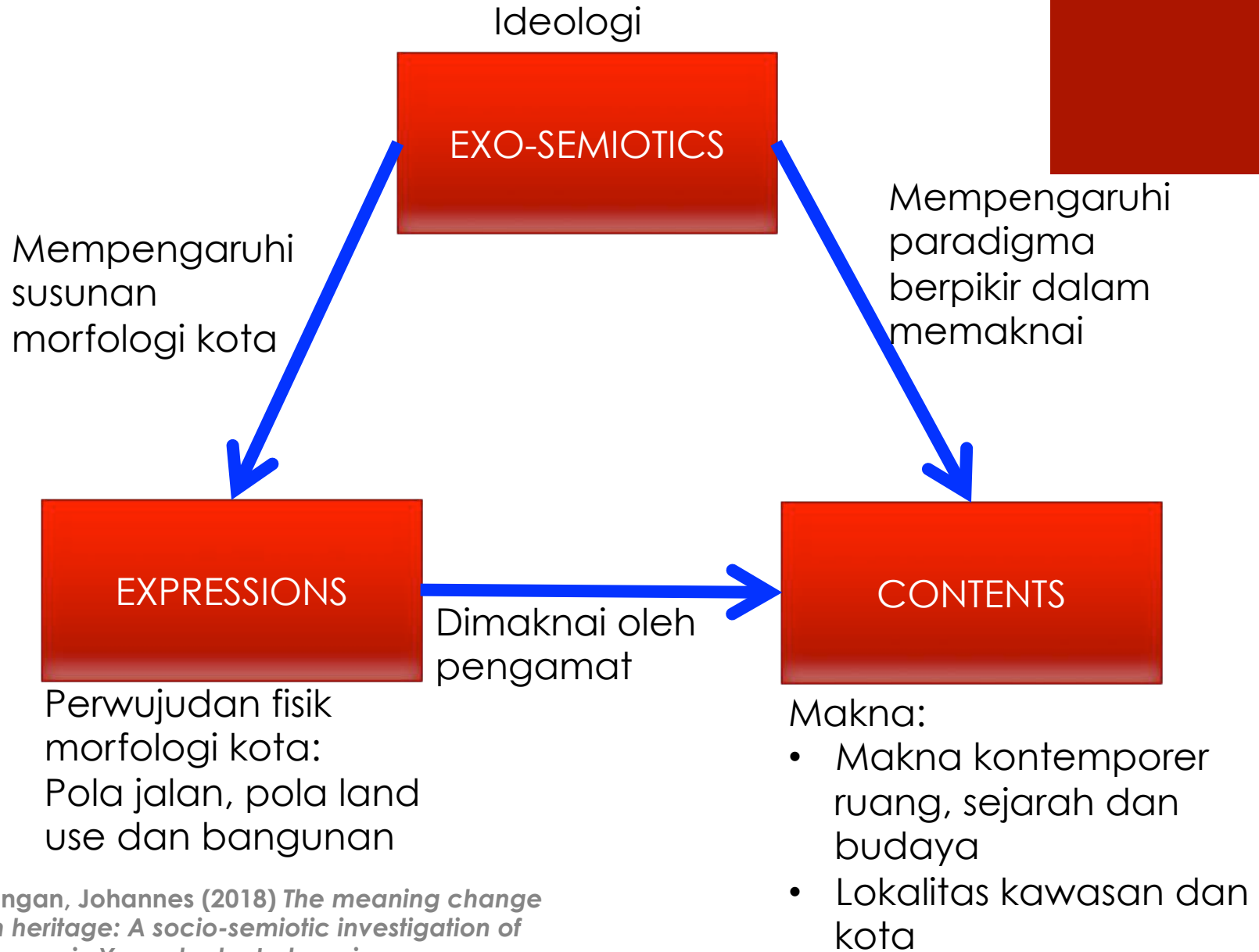
Socio-semiotics: suatu varian dari semiotics yang mempelajari kaitan antara ideologi dan subjektivitas pengguna ruang dengan bentukan fisik. Dalam kajian perkotaan, pendekatan ini juga disebut sebagai **Urban Semiotics**.

Sistem pemaknaan dijelaskan dalam tiga komponen:

- **Expression:** material culture (physical representations)
- **Content:** meanings
- **Exo-semotics:** the social, economic and political relations which shape material culture

Premis

17



Analisa dan Hasil

18

- Using the strategic location for commercial purpose
- Mass production of commercial signs

EXO-SEMIOTICS

- Capitalism
- Global market

Consistent exposure to citizens and visitors



CONTENTS

- Modernity and globalisation
- Secularism

Expression

Physical characteristics of street, land use and building type

Parlindungan, Johannes (2018) *The meaning change of urban heritage: A socio-semiotic investigation of historic areas in Yogyakarta, Indonesia*

EXO-SEMIOTICS

- Heritage conservation & HUL

- Past-romanticism
- Government's hegemony
- Heritage tourism

Consistent exposure to citizens and visitors



CONTENTS

- Traditional philosophy, myths
- Colonisation
- Nationalism
- Pride
- Subjective identity

Expression

Physical characteristics of street, land use and building type

Parlindungan, Johannes (2018) *The meaning change of urban heritage: A socio-semiotic investigation of historic areas in Yogyakarta, Indonesia*

P O L A R I T Y



- Secularism, profane
- Global world
- Rejecting tradition
- Utility function

- Traditional philosophy, sacred
- Local 'singularity'
- Prolonging tradition, nationalism
- Symbolic function

HYPO-SYGNIFICANT?

(A situation where the symbolic meanings are replaced by economic utility)

- Degrading the historical and cultural representations
- Degrading attitude and appreciation for historical and cultural representations



**The support of
GLOBALISATION AND
MODERNITY**

LOCALITY

**PARADOXICAL
SITUATION**

**URBAN
GROWTH**

**Reflecting GLOBALISATION
AND MODERNITY**

Embracing locality:

- Heritage conservation
- Endorsing places and metaphors
- Endorsing traditional philosophy and way of life
- Heritage as a sustainable resource



- Support urban growth through tourism
- Embracing places and metaphors to support tourism and strengthen the character of local society

Universal dogma:

- Modern buildings
- Capitalistic practices (international brands, consumerism, secularism)

Potensi pengembangan metode

Planning types	Critical aspects
Project assessment	Heritage and cultural impacts
Strategic planning	<ul style="list-style-type: none">• Internal & external influences• Social agents• City branding
Collaborative planning	<ul style="list-style-type: none">• Potential conflicts• Social agents' values
Tactical urbanism	<ul style="list-style-type: none">• Contextual analysis & design• Community actions and engagement